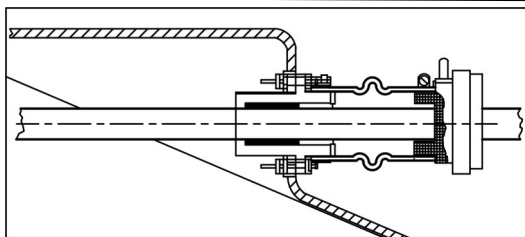




Clements Engineering supplies a wide range of sterntube arrangements according to customer preference, hull design and engine performance and type.

Generally, optimising cost and maintainability with durability and longevity of product life, the sterntube can be constructed using GRP, bronze or fabricated steel. The shaft sealing arrangement can be a dripless water cooled StrongSeal assembly, or a conventional bronze housing and packed gland.



Clements Engineering recommend half cutless bearing and dripless, water cooled strong seal assembly suitable for high performance leisure and medium duty commercial craft up to 35m LOA.

Tube Materials

Clements Engineering offers a range of materials for sterntube manufacture. These are as follows:

- Polyester resin GRP tube
- Non-ferrous metal tube
- Cast non-ferrous LG2 gunmetal tube
- Carbon steel tube

Polyester GRP

Multiple windings of chopped strand glass reinforcement with polyester resin, post cured to full hardness. Cured tubes are turned to required exact diameter then given a rolled coat of resin to fully seal. Internal tube and tube ends are gel coated.

- Machined to suit the type of shaft seal or packed gland to be installed.
- Manufactured with sufficient accuracy for cutless bearings to be fitted without further machining of the tube.
- Supplied in a wide range of sizes and lengths to suit individual customer requirements.



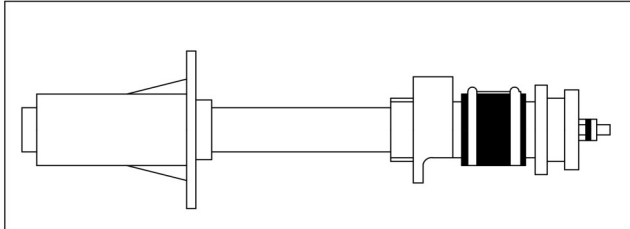
The StrongSeal dripless self-aligning seal assembly with its integral cast bronze hull fitting and cutless bearing housing. (see TD02 for shaft seal details)



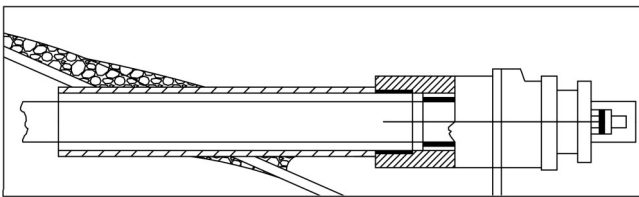
CLEMENTS ENGINEERING
PERFORMANCE IN MOTION

MARINE BEARINGS

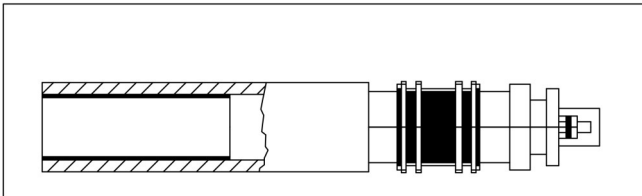
Further sterntube arrangements.



Standard GRP sterntube and cutless bearing - with water cooled flexible cast bronze packed gland. Can be fitted with the water cooled StrongSeal.



Standard metal sterntube with rigidly mounted half - cutless packed gland assembly, or metal sterntube can be fitted with the water cooled StrongSeal assembly.



Cast bronze sterntube and flexible half cutless bronze packed gland assembly - this cast sterntube can be fitted with the water cooled StrongSeal assembly.

Bespoke Systems suitable for heavier duty commercial craft can be supplied by Clements Engineering, based on proprietary equipment and adaptations of standard designs.

Clements Engineering (St Neots) Limited
The Industrial Park, Little Staughton, Bedfordshire, MK44 2BN

Tel: +44 (0)1234 378814 sales@clementsmarine.co.uk

Technical Datasheet TD06

Updated 11/14