



CLEMENTS ENGINEERING
PERFORMANCE IN MOTION

SOLID & FLEXIBLE SHAFT COUPLINGS

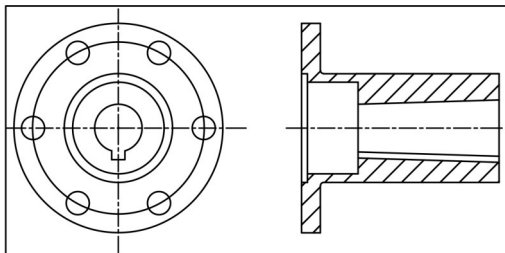


Clements Engineering offers a complete range of steel half couplings and adapters. These can be manufactured with tapered or parallel bores, and with male or female gearbox output flange fitting to suit the individual installation. Split couplings are also available with scalloped flanges that enable the removal of clutch parts with the coupling in situ.

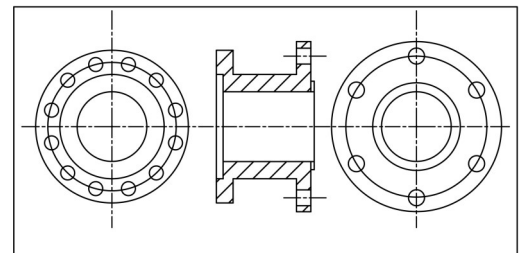
Standard and special coupling flanges are manufactured to suit all available gearbox output flanges.

R&D 910 series flexible couplings consist of a contoured flexible disc moulded in a tough, resilient polyurethane plastic material. The contoured disc gives clearance for the bolt heads and is able to flex freely. This flexibility takes up any temporary misalignment of the engine and shaft due to normal movement within the boat structure, or due to the engine moving on its rudder vibration isolation mountings. These couplings are fail safe, reduce noise and vibration and are simple to install by bolting between existing shaft flanges.

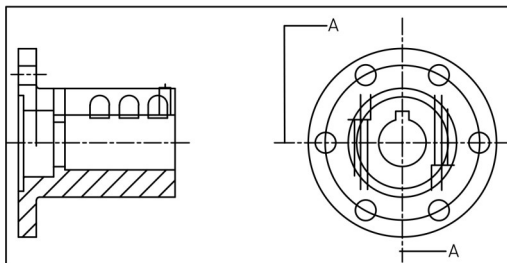
All couplings are electro plated to protect against corrosion.



Female tapered shaft coupling



Flange Adapter



Parallel Split Half Shaft Coupling

Bespoke systems suitable for heavier duty commercial craft can be supplied by Clements Engineering, based on proprietary equipment and adaptations of standard company designs.

Clements Engineering (St Neots) Limited

The Industrial Park, Little Staughton, Bedfordshire, MK44 2BN

Tel: +44 (0)1234 378814 sales@clementsmarine.co.uk

Technical Datasheet TD03

Updated 11/14